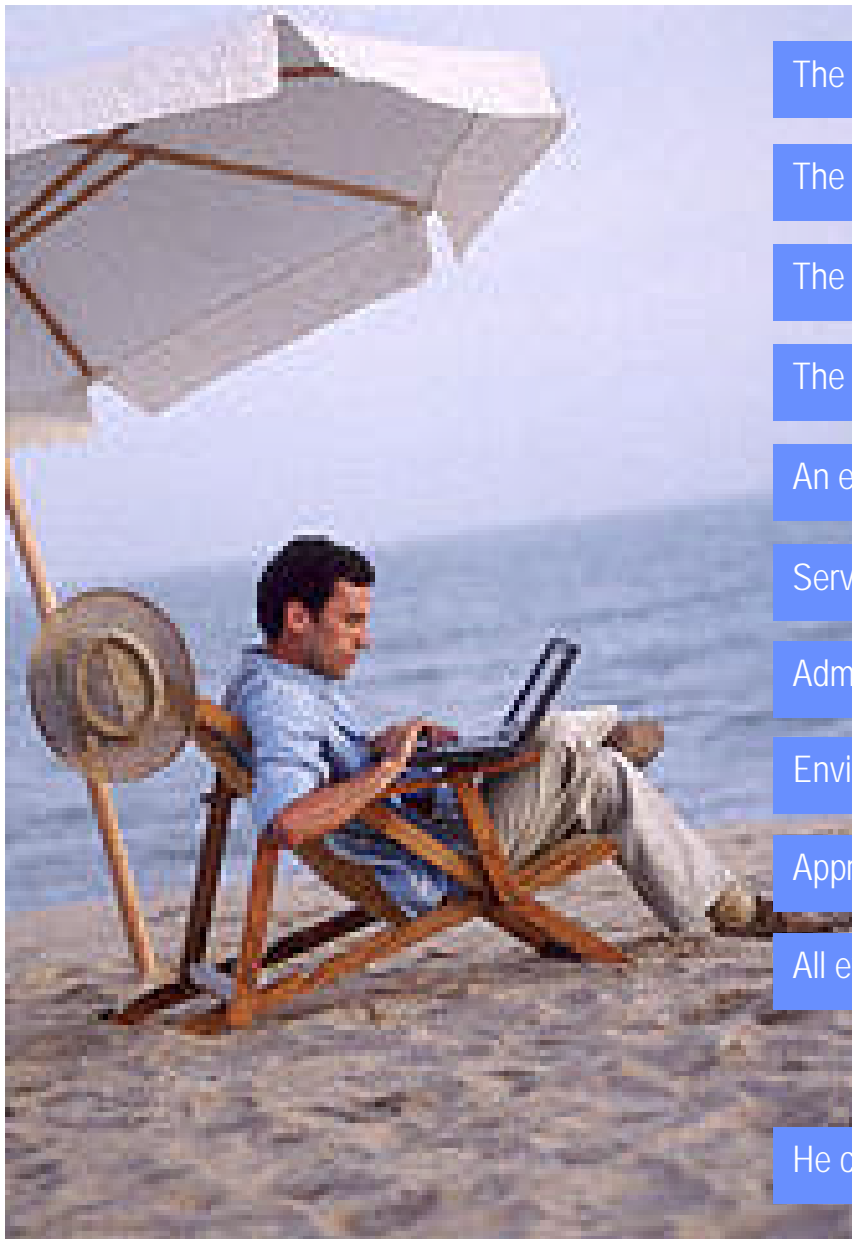


How's your Server Room?



The server room temperature is 22 °C

The humidity is 31%

The room was entered at 14:28

The door is not properly secured

An email door alert has been received

Server 2 local environment over 40°C

Administrator has been advised by SMS

Environment status remotely reviewed

Appropriate actions taken

All events and alerts have been logged

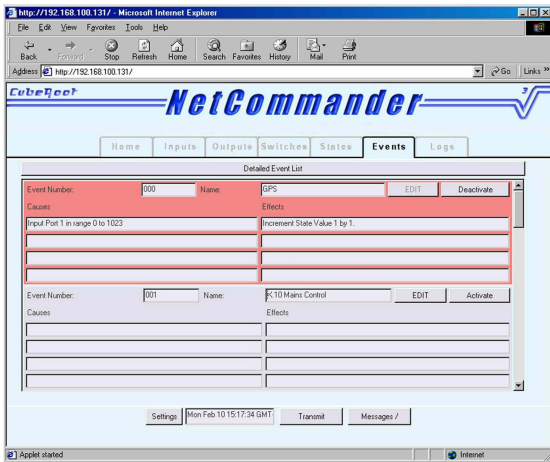
He can relax...

Thanks to NetCommander's
Remote Monitoring Solutions
You can monitor and control assets worldwide

NetCommander Server Room Monitoring

NetCommander is a web accessible network device for monitoring environmental and equipment alarm status in buildings, server and remote equipment rooms. NetCommander detects threatening conditions such as fire, flood or overheating before equipment is damaged or destroyed. A wide range of sensors, such as temperature, humidity, water, condensation, smoke, carbon monoxide, door and glass break can be incorporated to provide a complete environment monitoring and control solution. The NetCommander

software combines a powerful web based GUI with highly flexible embedded software. The GUI is served to provide remote encrypted access to the controller from anywhere in the world. Users can access real time data and system status via their browser, or receive user defined alert messages via email and SMS.



At the heart of the flexible software is an *advanced event scheduler*. It allows the user to manage the causes, the effects, the count of, and the states of up to 100 events and alarms from the various external I/O devices. Logic operations can be performed on all events and a 365-day / time scheduler,

further enhances the scheduler flexibility. The user can choose to be alerted either audio-visually or by email / SMS text when a device's environment condition is out of range. All alarms alerts and events can be logged via the event logger, which time stamps and details each event log.

Technical Specification

Features

- Ethernet attached standalone controller
- No client software required
- Powerful web based interface
- Real time information and status
- Advanced event scheduler
- Email / SMS text alarms and alerts
- 16 analogue / digital inputs
- 8 analogue / digital outputs
- Up to 8 switch outputs
- Temperature and humidity
- Triggered event logging
- 4 & 8 port expansion interfaces
- On board data storage

Sensors

Temperature	0-50°C ±0.7°C
Humidity	10-90% ±6%
Smoke	
Carbon monoxide	
Water	
Door	

General

Operating Temp	0 to 40 °C
Humidity	20-80% non-condensing
Power Supply	240v AC / 12v DC
Dimensions	164mm x 104mm x 55mm
Weight	500g

CE Approved



CubeRoot Ltd
18 Melton Street
Leicester
LE1 3NB UK

Tel: +44 (0)116 2627370
Fax: +44 (0)116 2628090

www.netcommander.biz

All trademarks acknowledged. Specification subject to change without notice.